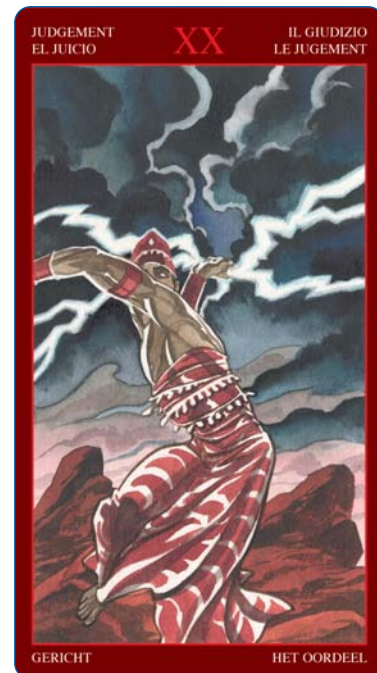


AFRO BRAZILIAN TAROT



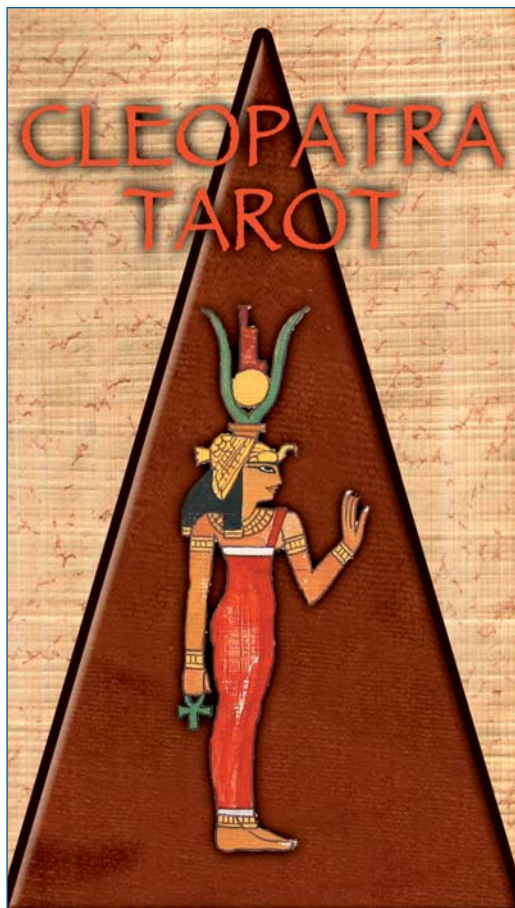
Alice Santana
Giuseppe Palumbo

Orishas: divinities and myths from an ancient magic, transformed through time and continents and still alive today. These Tarots open a canal towards the beneficial and natural forces that can be drawn from for cures, meditations or rituals. The divinities of the Brazilian Santeria unite with the Tarot archetypes with surprising ease.



CLEOPATRA TAROT

Etta Stoico
Silvana Alasia

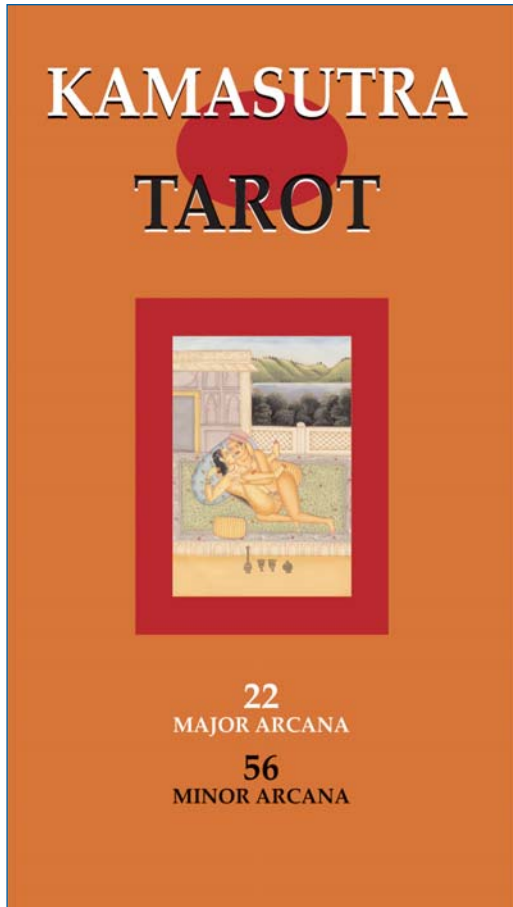


This deck is dedicated to the last Egyptian queen, Cleopatra, famous for her exceptional learning as well as her harmonious voice. The Tarots reproduce the Egyptian divinities and the astral spirits of the Zodiac of Denderah. The Egyptians attributed the power to alter human destiny to these figures, uniting the magic of the stars with the symbolism of the Tarot.

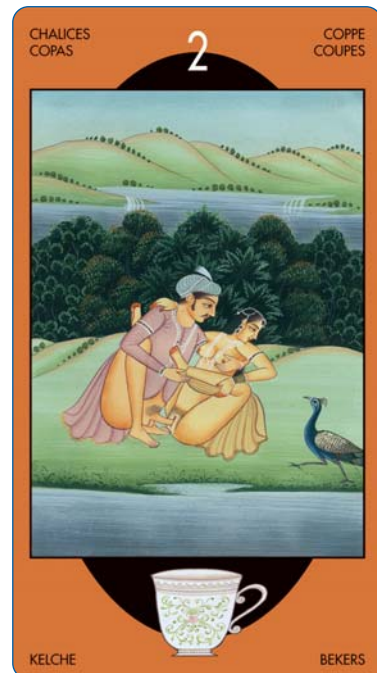
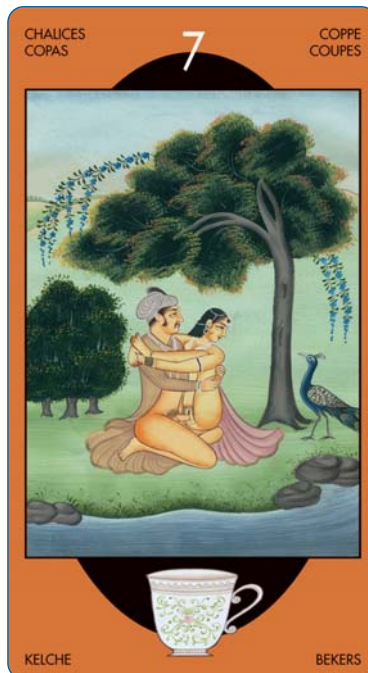
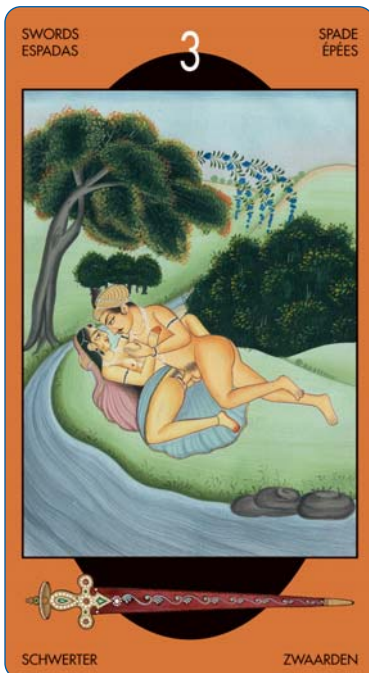


KAMASUTRA TAROT

Mallnaga Vatsayayana



The Kama is the pleasure attained through the five senses, aided by the spirit in union with the soul. Kamasutra signifies “aphorisms of love”. According to legend, the Kamasutra was created by the Indian god Shiva who, overwhelmed by the joys of sexual experience, dictated to a servant a treatise on erotic art, in order to make known and render eternal the amorous practices that he himself had experimented.

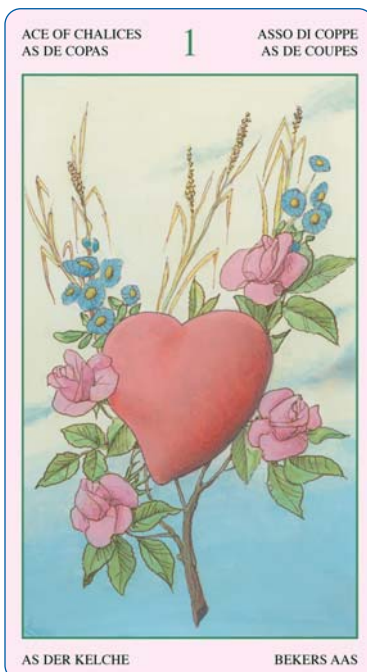


TAROT LENORMAND



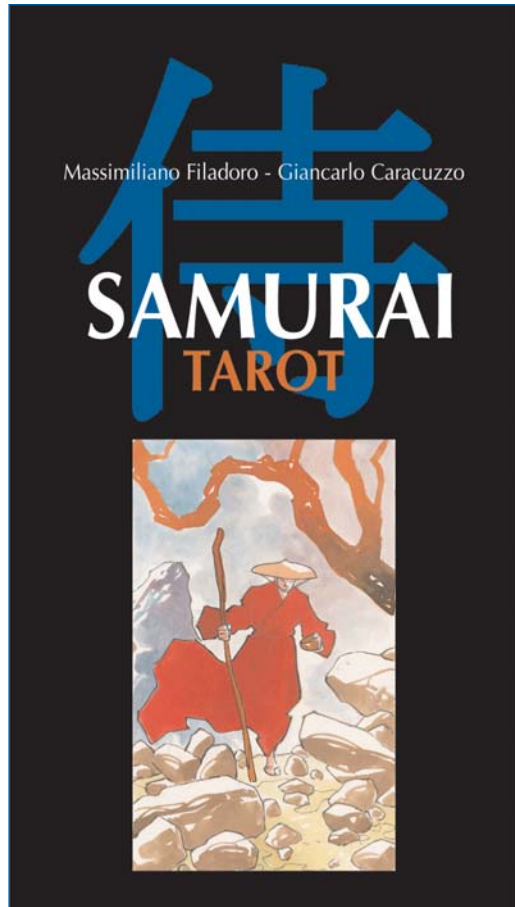
Madame Lenormand
Ernest Fitzpatrick

The first tarot deck inspired by Madame Lenormand, the most famous cartomant in history. The images come from the Book of Toth by Etteilla and from the oracle cards by the same Lenormand. Thanks to the simplicity of these Tarots and their actual intuition, a key to read the present, past and future can be found.



SAMURAI TAROT

Massimiliano Filadoro
Giancarlo Caracuzzo



From the mists of a not so distant past, the figure of the warrior Samurai still stands out as a symbol capable of inspiring our personal journeys. The path of the Samurai represents a voyage of internal betterment to discover the strength and the serenity hidden in the secrets of the soul.



TAROT OF THE SPIRIT WORLD

Bepi Vigna
Roberto De Angelis



There are moments when we become aware of something that is superior to us and that guides us. It is as if invisible forces interact with us, even if we often make the effort not to consider them, opposing them with the force of our rationality. The Tarot of the Presences offer a key to explore the boundaries between reason and emotions, the place of the soul where our universal subconscious materializes.

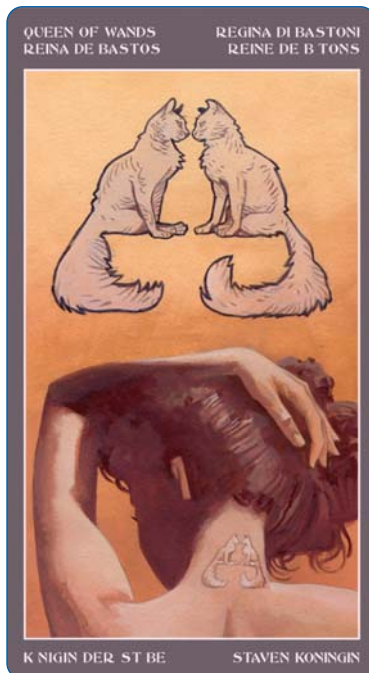


TATTOED TAROT



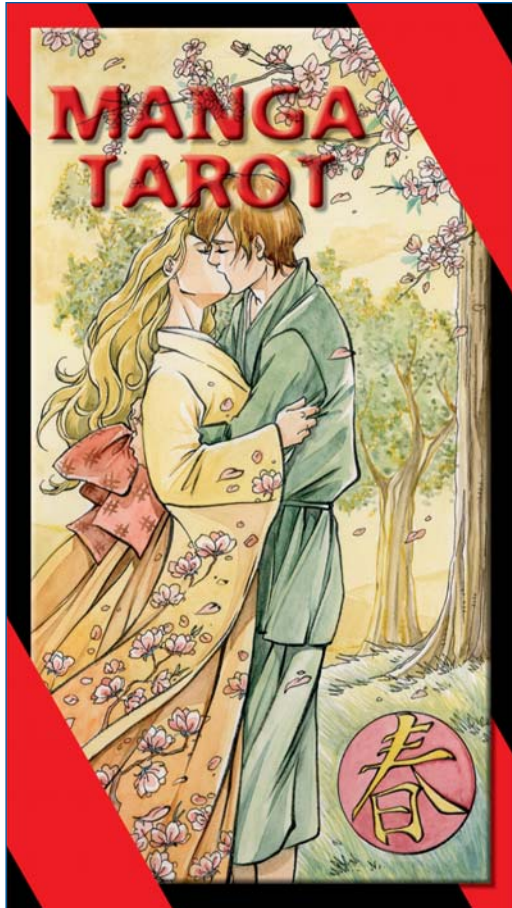
Pietro Alligo
Cristiano Spadoni

Signs painted on the skin: timeless symbols that reflect what we are or what we want to be. Tattoos, like the Tarot, are a hidden alphabet, connected to parts of the body, capable of becoming part of destiny by integrating themselves with the intimate personality of whoever has chosen them. Each sign, each part of the tattooed body, has a story and a meaning.

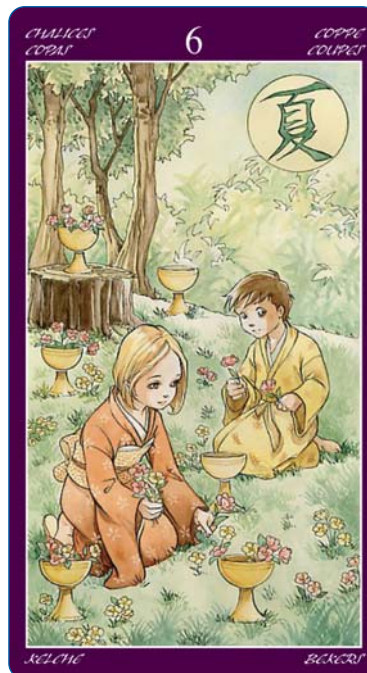


MANGA TAROT

Riccardo Minetti
Anna Lazzarini

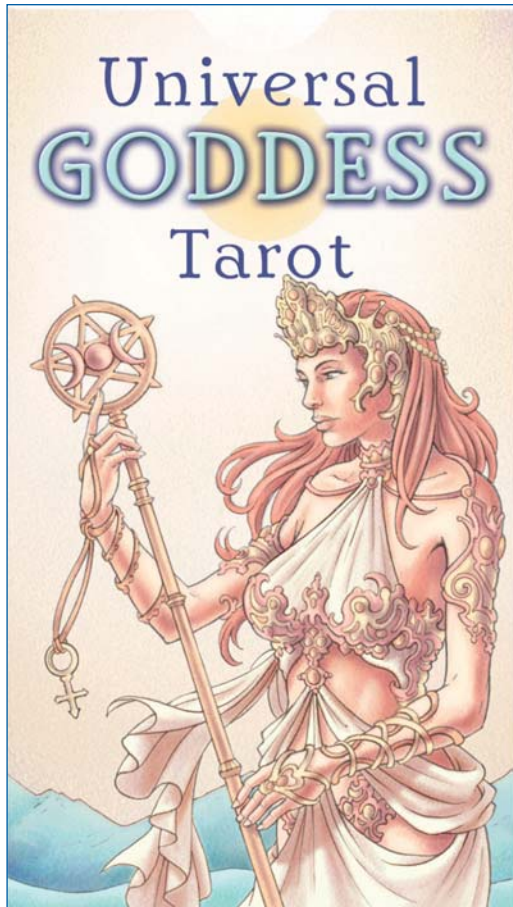


Spring, summer, autumn winter: the seasons are the first measure of time and the cyclic nature of things. One is connected to the other and they transmit the sense of continuity and change in every situation. These Tarots show a universe of connections and references, constructed around the fantastic epic of the Orient.



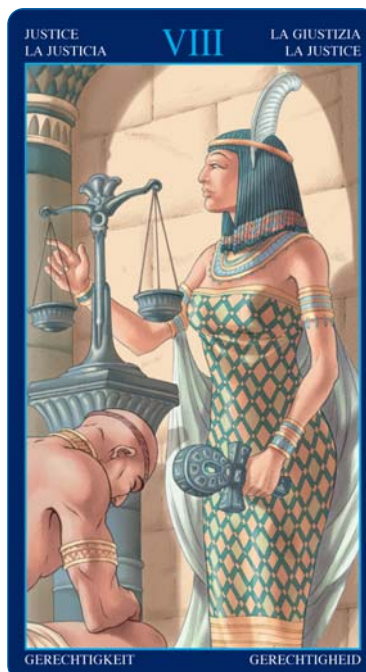
UNIVERSAL GODDESS TAROT

Maria Caratti
Antonella Platano



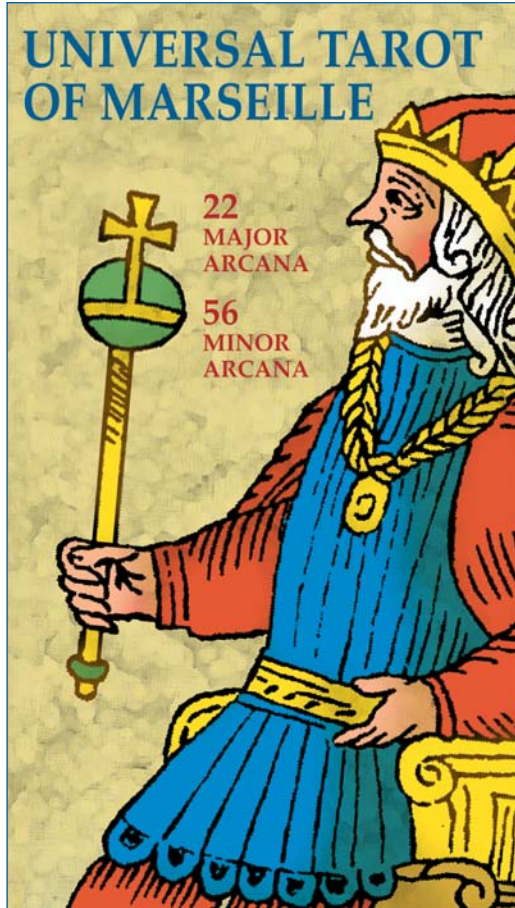
Mother, wife, warrior, witch: the divine feminine figure does not have just one voice. Her form is that of all the goddesses of mythology, but each goddess is different and incarnates a single aspect of the Divine, of the human, and of nature.

These tarots range through all the world mythologies searching for the incarnations of the Goddesses.



UNIVERSAL TAROT OF MARSEILLE

Claude Burdel

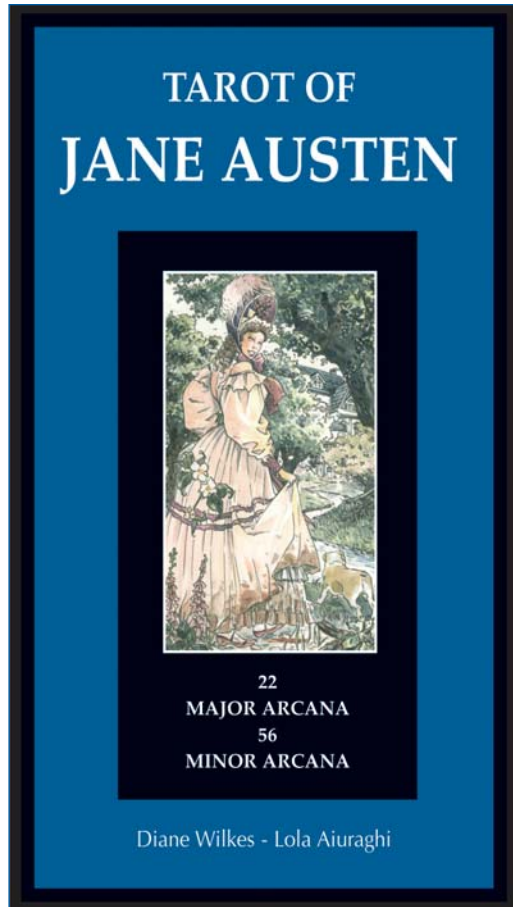


The historical highly sought-after deck of Claude Burdel (1727-1799) has been restored in its colours and lines to give a new energy to the ancient images, amplifying their symbolic meaning, which was already extraordinarily powerful and rich with divinatory suggestion. The Marseillaise Tarot take us directly to the origin of the Tarot.

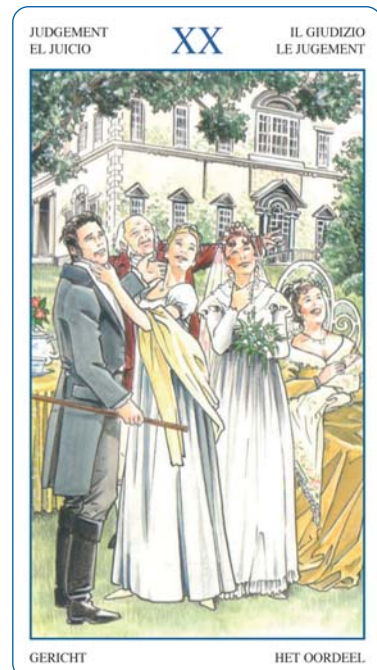


TAROT OF JANE AUSTEN

Diane Wilkes
Lola Airaghi

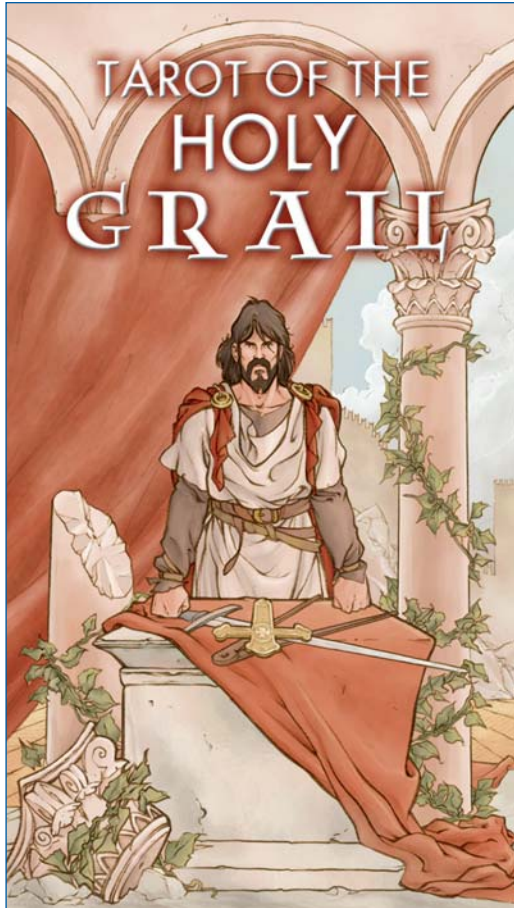


The Tarot of Jane Austen is the result of an exhaustive research, concerning the links between literature and the symbolic world of the Tarot. Characters, dialogues and customs converge to create a meaning that is at the same time erudite, intuitive and profound. The works of Jane Austen are a milestone for English literature and have been recreated in the cinema on numerous occasions.



TAROT OF THE HOLY GRAIL

Lorenzo Tesio
Stefano Palumbo



The myth of the Grail was born with the Arthurian cycle, where the search for the Cup of Life was the search for divine perfection of the chivalrous ideal. The legend, from the orient, tells of the Grail's arrival in Europe with the Templars, to be united forever with medieval mysticism, and finally to be carved into symbols of the Tarot.

